

# CUSTOM HOME CONCEPT

## 78 SILVERSIDE DRIVE



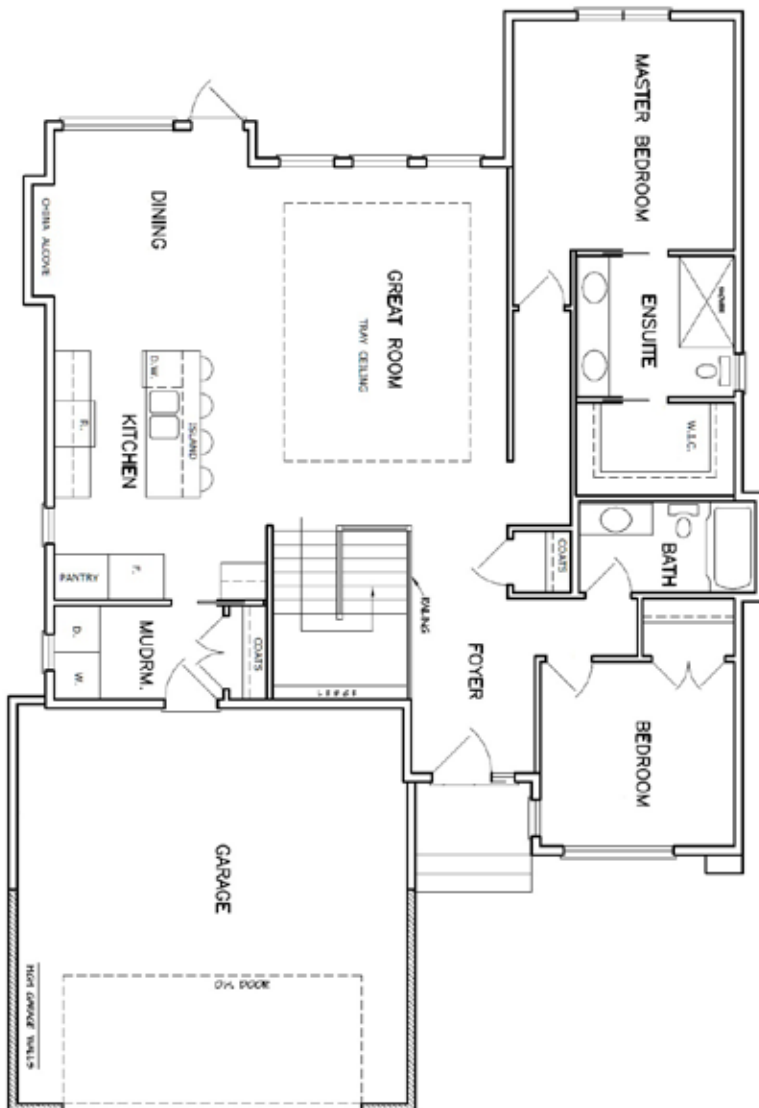
**\$529,900** (including lot & GST)

At 1,402 square feet, Arlt Homes' latest bungalow plan has the features you are looking for and is perfect for people looking to live a more simplified life, but who still want enough space to live large in the rooms you use most.

The open concept kitchen and great room have oversized windows and are perfect for entertaining family and friends. A large kitchen island allows the chef to remain part of the action. The main floor bedroom with adjacent bathroom is ideal for hosting guests or can function as a separate retreat away from the main area of the house. The master suite has an oversized shower, dual sinks and enormous walk-in closet. The main floor laundry is conveniently located off the kitchen.

### DETAILS:

- 1,402 sq ft
- 2 car attached garage
- Master ensuite with dual sink and walk-in closet
- Main floor laundry off kitchen
- Oversized windows for great views



(204) 669-3394  
info@arlthomes.com  
www.arlthomes.com