

CUSTOM HOME CONCEPT



80 SILVERSIDE DRIVE

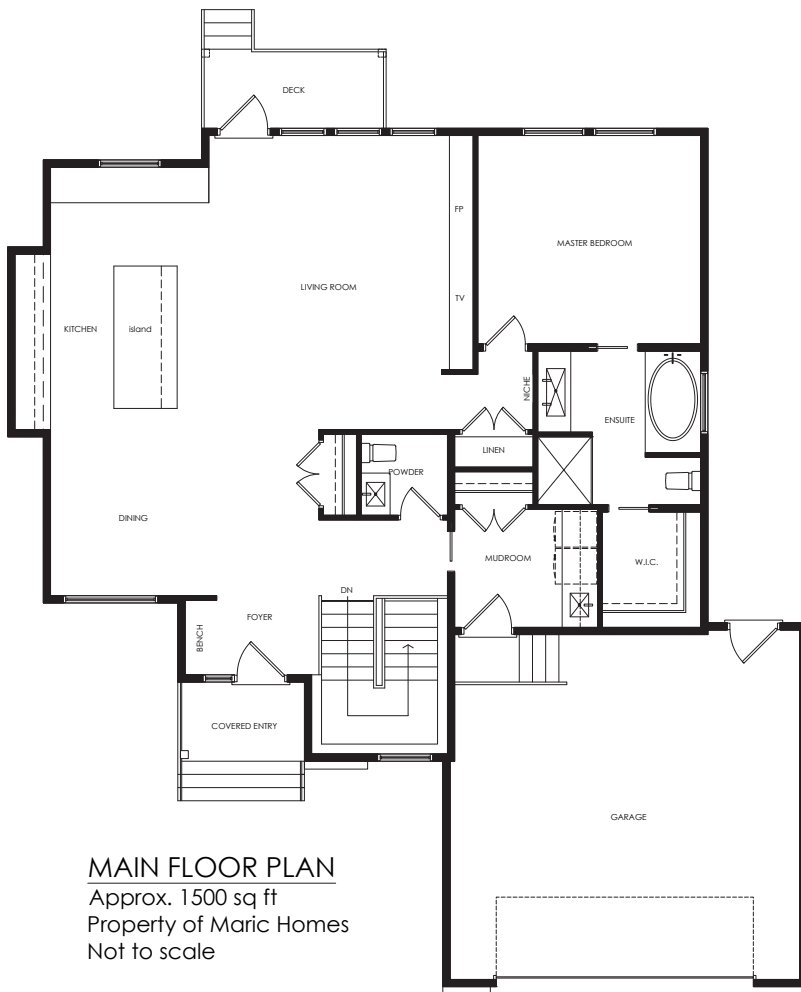
\$539,900 (including lot & GST)

Scenic Southlands Village at Pritchard Farm is the setting for Maric Homes' 1,500 square foot condo at 80 SilverSide Drive. This one bedroom lookout lot incorporates a huge, open main living area that takes advantage of the idyllic setting and views.

A gorgeous kitchen, spectacular ensuite, lots of storage, and beautiful finishing details all go hand in hand with the relaxed lifestyle offered in Southlands Village. Built with the craftsmanship and amenities Manitoba has come to expect from Maric Homes, this stunning home is perfectly complemented by its stunning location.

DETAILS:

- 1,500 sq ft
- 2 car attached garage
- Master ensuite and walk-in closet
- Main floor laundry and mudroom
- Built-in fireplace and television unit



MAIN FLOOR PLAN
Approx. 1500 sq ft
Property of Maric Homes
Not to scale

MARIC HOMES



(204) 339-2035
info@marichomes.com
www.marichomes.com